



NAPCRG

Trainee Resource Packet

51ST ANNUAL NAPCRG MEETING

*October 30–November 3, 2023
San Francisco, California*

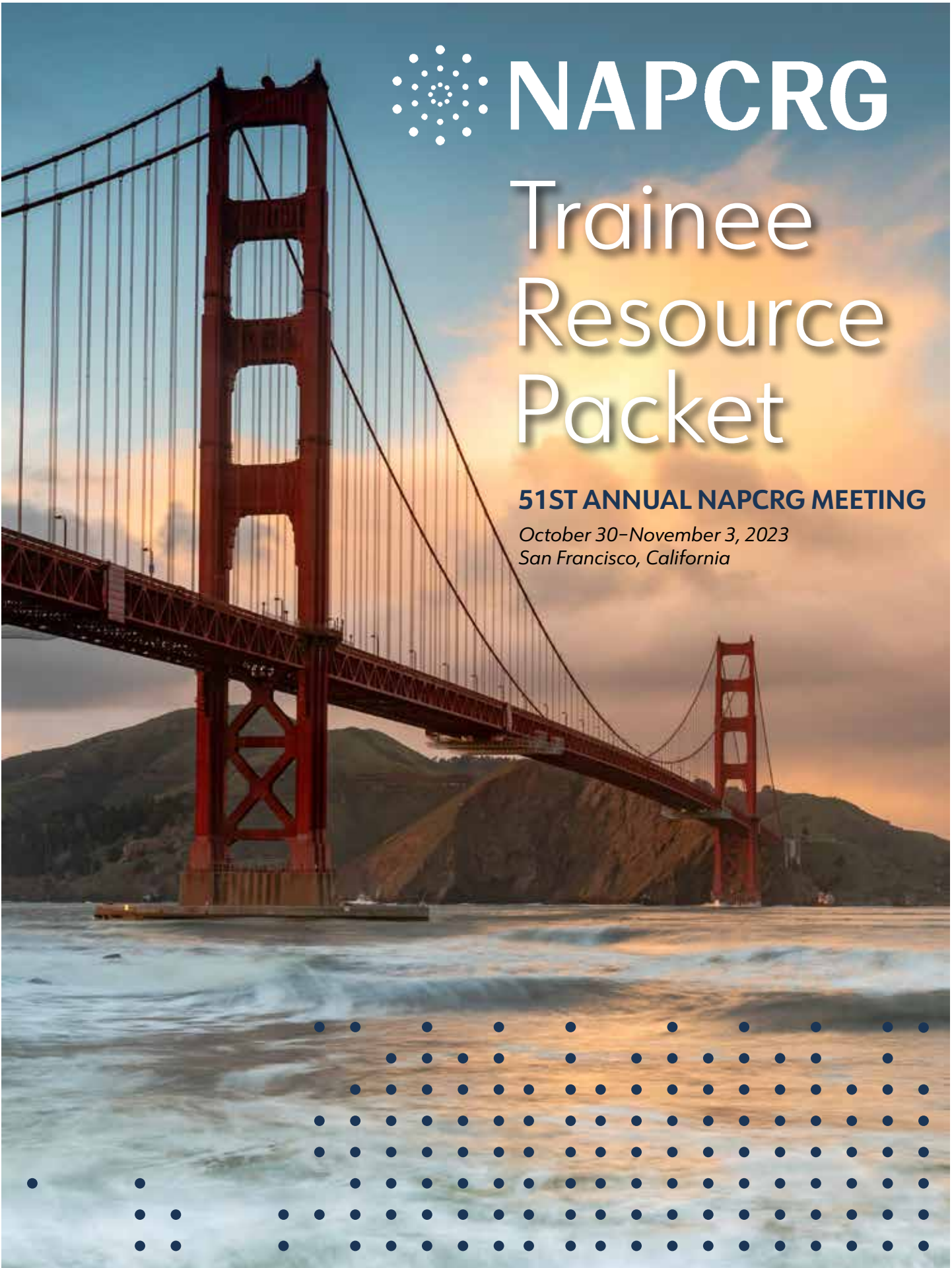
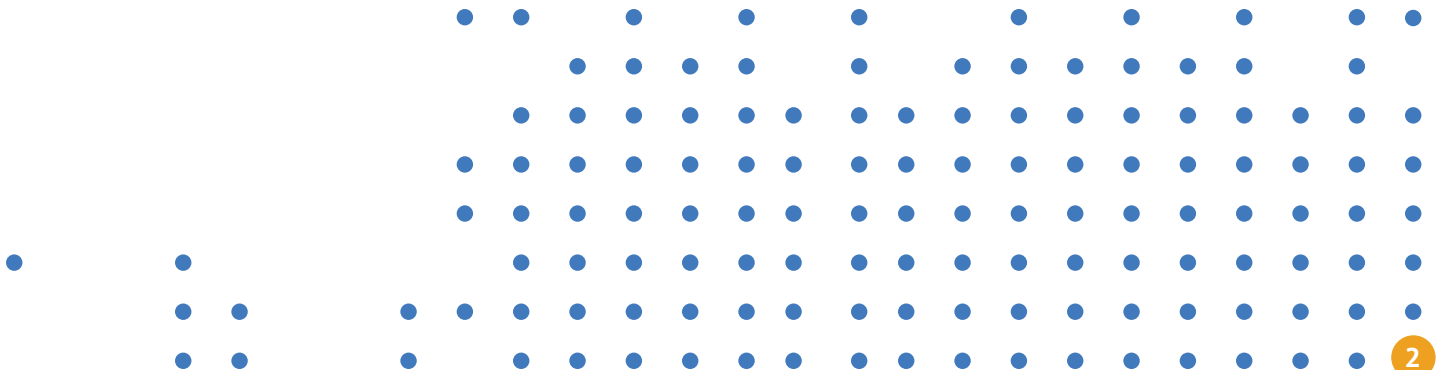


Table of Contents



- 3 Meet the Trainee Committee
- 4 What to Expect: Rising Stars in Research - Trainee Pre-Conference
- 6 Trainee Specific Events
- 7 Fun Things to Do in San Francisco
- 9 Other Ways to Get Involved in NAPCRG
- 10 Grow Your Grant Skills with the Grant Generating Project
- 11 Thank you to our Generous Sponsors
- 12 Translational Bioscience Graduate Program



Meet the Trainee Committee



We are a group of trainees working for trainees at NAPCRG. We will be attending the Annual Meeting in San Francisco Oct. 30-Nov. 3, 2023, and we hope that you come and say hi to us, or send us an email!

Meghan Gilfoyle

(Committee Chair)

gilfoylm@mcmaster.ca

Postdoctoral Fellow at McMaster University, Hamilton, Ontario

Research areas: integrated primary and social care, participatory health research and trust



Taylor Bosworth

ktbrgt@umsystem.edu

First year medical student (M1) in the Tom and Anne Smith MD/ PhD program at the University of Missouri - Columbia, School of Medicine, Columbia, Missouri, US. Senior Research Specialist in the Department of Family Medicine, University of Missouri - Columbia, School of Medicine, Columbia, Missouri, US.

Research interests: Addiction science and medicine, implementation science, and health technologies



Ione Locher

ione.locher@bannerhealth.com

Third year family medicine resident at the University of Arizona - Phoenix

Research interests: quality improvement, medical education, qualitative and mixed-methods research, and maternal child health



Ashley Chisholm

chisholm.ashleym@gmail.com

PhD Candidate, University of Ottawa
Toronto, Ontario

Research interests: health services and policy research, health professions education, health system transformation



Minika Ohioma

minika.ohioma@mail.mcgill.ca

Dept of Family Medicine, McGill University, Montreal, Quebec, Canada and Royal Victoria Medical Centre, Abuja, Nigeria

Research interests: A qualitative descriptive hospital-based study about the effect of the COVID-19 pandemic on perinatal care in Nigeria. It also describes how COVID-19 contributed to the "three phases of delay" model of Thaddeus and Maine that affect pregnancy-related adverse outcomes on low- and middle-income countries.



Natalie Gross

NAPCRG Staff and Trainee Committee Staff Liaison

ngross@napcr.org

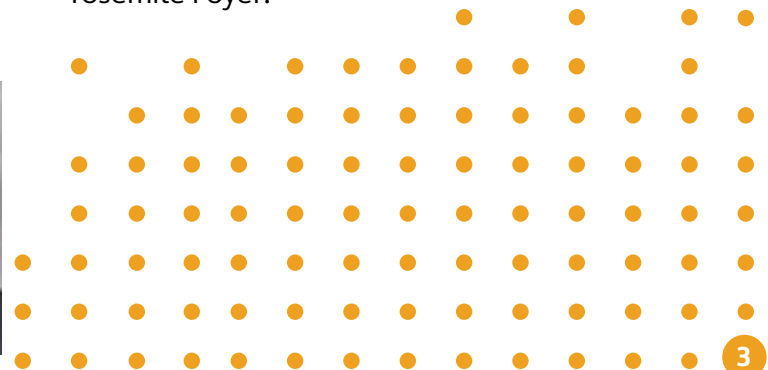
Need help finding something or someone? Come find me at the registration desk located in the Yosemite Foyer!



Bryce Ringwald

Bryce.Ringwald2@ohiohealth.com

Family Medicine Resident, PGY-3 Chief Resident
OhioHealth Riverside Methodist Hospital



Trainee Preconference Session

Rising Stars in Research Pre Conference – What to Expect!



RISING STARS IN RESEARCH: TRAINEE PRE-CONFERENCE

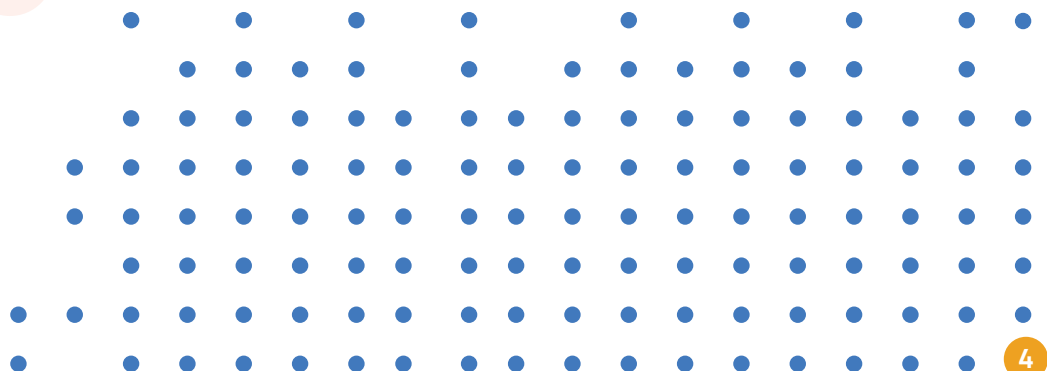
Monday, October 30, 2023 | 10 a.m. - 2 p.m. | Room: Franciscan C & D

Theme: Research of the Future

The trainee pre-conference workshop will consist of skill building and career development sessions, as well as relevant topical sessions aligning with our theme “Research of the Future.” This includes topics surrounding the use of Artificial Intelligence in primary care and patient and public engagement in primary care research. This workshop will consist of didactic sessions (e.g., presentations), as well as group discussion and activities. This pre-conference workshop will allow for ample opportunity for both formal and informal discussion with peers.

The trainee preconference is a relaxing setting and a great place to meet other trainees! You will also have the opportunity to meet with other researchers (who are not trainees) during our trainee networking session (see schedule on next page for more info).

Light refreshments provided



Trainee Preconference Schedule



Theme: Research of the Future

10–10:10 a.m. • **Welcome from the Trainee Committee**

10:10–10:20 a.m. • **Icebreaker**

10:30–11 a.m. • **Keynote Presentation 1**

Speaker: Winston Liaw, Family Physician, Health Services Researcher, and Chair of Health Systems and Population Health Sciences at the University of Houston.

11–11:10 a.m. • **Break (10 min)**

11:10 a.m.–12:10 p.m. • **Knowledge Dissemination Workshop**

Facilitator: Jon Salsberg, Associate Professor of Primary Health Care Research, University of Limerick School of Medicine (Ireland), and Adjunct Professor, Department of Family Medicine, McGill University (Canada).

This training will allow participants to reflect on dissemination goals that include both increasing knowledge and action; identify key audiences; identify and craft audience-appropriate messages; identify appropriate messengers; understand how to co-author articles & abstracts

12:10–12:30 p.m. • **Break (20 min)**

12:30–1 p.m. • **Keynote Presentation 2**

Speaker: Jacqueline (Jaky) Kueper, PhD is Research Lead of the AI Deployment and Evaluation (AIDE) Lab at Trillium Health Partners in Ontario, Canada.

1–2 p.m. • **Networking Session**

A collaborative session with NAPCRG trainees and mentors. The intention of this session is to aid in community building and engagement during and after the conference, while also serving as a time to exchange ideas and create opportunities for potential project collaboration.

2:05 p.m. • **Wrap-up**



Winston Liaw

KEYNOTE SPEAKER

Family Physician, Health Services Researcher, Chair of Health Systems & Population Health Sciences at the University of Houston (U.S.)



Jon Salsberg

WORKSHOP FACILITATOR

Associate Professor of Primary Health Care Research, University of Limerick School of Medicine (Ireland), and Adjunct Professor, Department of Family Medicine, McGill University (Canada)

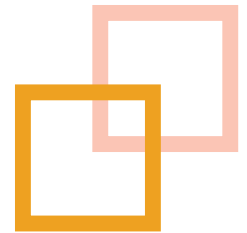


Jaky Kueper

KEYNOTE SPEAKER

PhD, Research Lead of the AI Deployment and Evaluation (AIDE) Lab at Trillium Health Partners in Ontario, Canada

Trainee Specific Events



Welcome to NAPCRG! The NAPCRG Trainee Committee is committed to helping you make the most of your conference experience. Here are trainee-specific events to attend.

Monday, October 30

Rising Stars in Research Precon

10 a.m.-2 p.m.
Room: Franciscan C & D
Skill building and career development sessions, relevant topical sessions in Artificial Intelligence in primary care and patient and public engagement in primary care research.

First Time Attendee & New Member Orientation

5:15-6 p.m. • Plaza Room A
Enjoy drinks and hors d'oeuvres while mingling with other new conference attendees. Network and learn more about what NAPCRG has to offer!

Opening Reception

6 p.m.-7 p.m. • Plaza Room A
More drinks and appetizers! This session is open to all conference attendees to help expand your network of opportunity for the remainder of the conference.

Tuesday, October 31

Trainee SIG

7-7:45 a.m. • Grand Ballroom B
Join other trainees for breakfast and discussion regarding shared experiences.

Poster Session

1:45-2:45 p.m.
Grand Ballroom A
Help support other trainees by visiting posters designated SRF.

Trainee Reception

6:30-7:30 p.m. • Imperial A
A night dedicated to the trainees. Enjoy time with others around the same level of training. Mingle (if that's your thing), make friends, and build collaborations.

NAPCRG Trainee Committee Meeting

12:30-1:45 p.m.
Room Union Square 25
Come join us! Get more involved in planning next year's efforts to enhance the trainee experience at NAPCRG.

Distinguished Trainee Oral Presentation Session

3-4:15 p.m.
Union Square 19 & 20
Support 10 fellow trainees as they present their scholarly projects. Awards will be given to the top three research projects.

All Attendee Reception

8-10 p.m. • Plaza Room A
Grab your Halloween costumes for a night of music and comradery. Help celebrate the future of primary care research!

Wednesday, November 1

Trainee SIG

7-7:45 a.m. • Grand Ballroom B
Join other trainees for breakfast and discussion regarding shared experiences.

Poster Session

5-6 p.m. • Grand Ballroom A
Help support other trainees by visiting posters designated SRF.

Thursday, November 2

Trainee SIG

7-7:45 a.m. • Grand Ballroom B
Join other trainees for breakfast and discussion regarding shared experiences.

Awards Ceremony & Distinguished Papers

8-10:45 a.m. • Grand Ballroom B
Celebrate and aspire as researchers of all stages of their careers will be honored for their accomplishments.

Poster Session

10:30-11:30 a.m.
Grand Ballroom A
Help support other trainees by visiting posters designated SRF.

Things to Do in San Francisco

NAPCRG's 51st Annual Meeting is taking place in one of the great cities of the world, so make the most of your time in town!



Union Square

~6 min walk from the Hilton San Francisco

High-end stores ring Union Square now, but this people-watching plaza has been a hotbed of protest, from pro-Union Civil War rallies to AIDS vigils. Atop the central pillar is the Goddess of Victory.

unionsquashop.com



Mazarine Coffee

~9 min walk from the Hilton San Francisco

Modern, industrial space for espresso drinks and pour-over coffee, considered by some to be the best in downtown San Francisco. Also serves salads and sandwiches.

mazarinecoffee.com

Yerba Buena Gardens

~12 min walk from the Hilton San Francisco

Yerba Buena Gardens is the lush green getaway in the concrete heart of SoMa, or South of the Market neighborhood, in San Fran. The garden is a prime spot for a picnic, but also features an art museum (the Yerba Buena Center for the Arts), an ice skating rink, and a Children's Museum (the Children's Creativity Museum) all within the park. Martin Luther King Jr Memorial Fountain is a wall of water that runs over the Reverend's immortal words: "...until justice rolls down like water and righteousness like a mighty stream."

yerbabuenagardens.com



Chinatown San Francisco

~18 min walk or 6 min drive from the Hilton San Francisco

San Francisco's storied Chinatown is the oldest in North America, and the largest off the Asian continent. For almost 200 years, the 41 historic alleyways packed into Chinatown's 22 blocks have welcomed newcomers from every province, and been the stage for sometimes improbable stories of tenacity and resilience. For a real treat, duck into the Golden Gate Fortune Cookie Factory at 56 Ross Alley to see how the classic treats are made by hand – and even crunch into some hot-off-the-cast iron griddle.



Explore the Exploratorium!
 Take advantage of the half-day schedule on **Thursday, Nov. 2**, to visit the Exploratorium After Dark! Tickets are \$19.95 for an adults-only visit from 6-10 p.m. You can use the streetcar a couple of blocks away to get there, or grab an Uber. More info: www.exploratorium.edu/visit/calendar/after-dark

Exploratorium

~38 min walk or 14 min drive from the Hilton San Francisco

Adult Admission: \$39.95

Is there a science to skateboarding? Do toilets really flush counterclockwise in Australia? At San Francisco’s hands-on science museum, founded by Robert Oppenheimer, you’ll find out things you wish you learned in school. Combining science with art and investigating human perception, the Exploratorium nudges you to question how you perceive the world around you. The setting is thrilling: a 9-acre, glass-walled pier jutting straight into San Francisco Bay, with large outdoor portions you can explore free of charge, 24 hours a day. Closed on Mondays.

www.exploratorium.edu

Aquarium of the Bay

~43 min walk or 12 min drive from the Hilton San Francisco

Adult Admission: \$32

Sharks circle overhead, manta rays sweep by and seaweed sways all around at the Aquarium of the Bay, where you wander through glass tubes surrounded by sea life from San Francisco Bay. It’s not for the claustrophobic, perhaps, but the thrilling fish-eye view leaves kids and adults alike enthralled.

www.aquariumofthebay.org

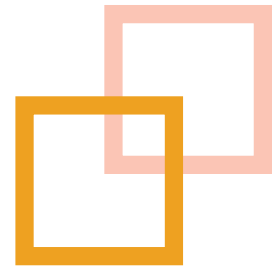
OTHER ATTRACTIONS

Check out Hilton’s list of things to do nearby!

www.hilton.com/en/hotels/sfofhh-hilton-san-francisco-union-square/things-to-do/



Other Ways to Get Involved at NAPCRG



Committee on Advancing the Science of Family Medicine (CASFM)

The mission of CASFM is to promote and actively contribute scholarship that advances the science of family medicine for the betterment of patients and their communities. It assures that the development, translation, and implementation of new knowledge rapidly becomes part of the fabric of family medicine through internally led writing initiatives such as white papers and manuscripts.

CASFM has six work groups:

- Complexity Science (CS)
- Health Information Technology (HIT)
- Medical Education (ME)
- Participatory Health Research (PHR)
- Practice-Based Research Network (PBRN)
- Research Methods (RM)

NEW! Family Practice Launches Partnership with the Committee on Advancing the Science of Family Medicine (CASFM). [Read the announcement here.](#)

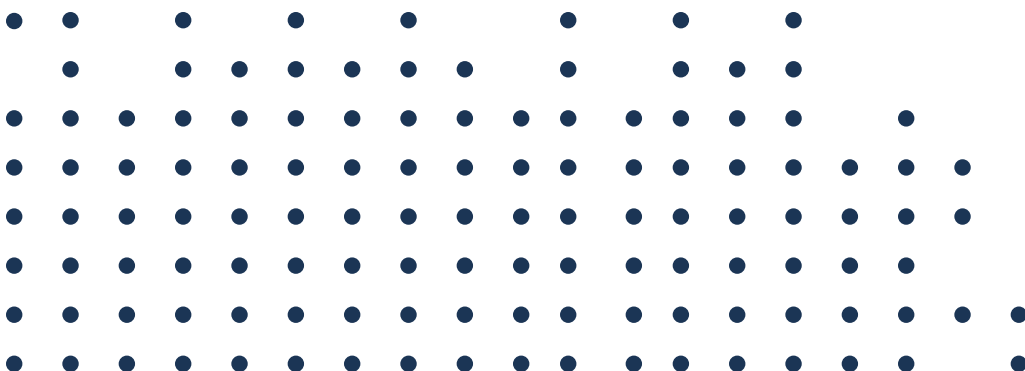
Access the CASFM methods briefs unlocked [here](#).

CHAIR:

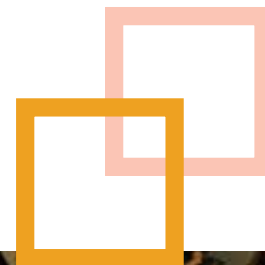
Jon Salsberg, PhD

STFM LIAISON:

Miranda Moore, PhD



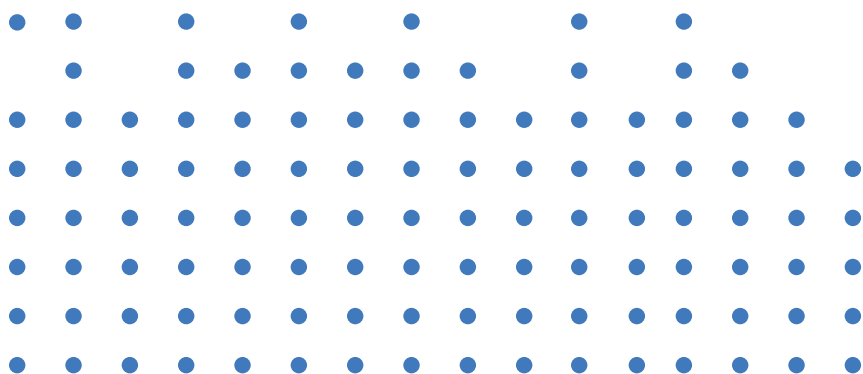
Grow Your Grant Skills with the Grant Generating Project (GGP)



The GGP seeks to equip family medicine and primary care researchers with the skills they need to successfully develop and submit grants for research funding. Once learned, these skills continue to help generate new funds for family medicine research and training, year after year. Through this year-long fellowship, participants are not only taught analysis and writing skills, but they also gain access to valuable networking opportunities.

By the end of this course, GGP Fellows should be able to develop and describe an integrated research project or program relevant to primary care research. This will include being able to effectively communicate a research agenda in various formats from written to oral for a range of audiences with varying levels of research experience.

Applications open in the spring.



ELIGIBILITY

The GGP is open to all faculty members who are interested in pursuing investigator-generated independent research on topics of interest to primary care. Applications are welcome from individuals with MD, PhD, ScD, EdD and other terminal degrees. Previous course work or applied experience in research methods is preferred for optimal participation. Each Fellow will be responsible for a \$4,000 USD tuition (does not include conference registration fees) in addition to their travel costs. A limited number of scholarships are available.

LEARN MORE ABOUT THE GGP



Thank you to our **Generous Sponsors**



A big thank you to the **University of Missouri Department of Family and Community Medicine** and the **MU Translational Biosciences Graduate Program** for sponsoring the Trainee Reception on Tuesday, Oct. 31! Learn more about the Translational Biosciences program on page 12.

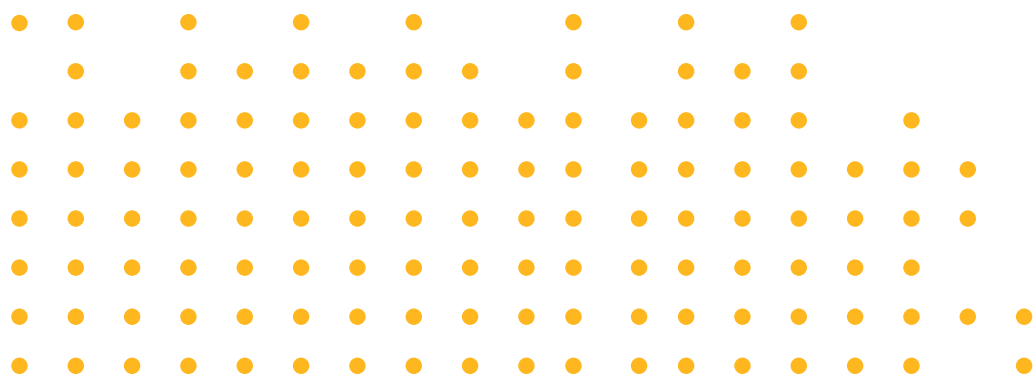
And thank you to the **California Health Care Foundation** for sponsoring the beverages during the trainee preconference session!



Family and
Community Medicine
School of Medicine
University of Missouri



California
Health Care
Foundation



Translational Bioscience Graduate Program



School of Medicine
University of Missouri



Translational Biosciences PhD Program

WHY US

MOVING GROUNDBREAKING RESEARCH INTO LIFE-CHANGING REALITY

The Translational Biosciences PhD program represents a new paradigm for graduate training in biomedical research. Spanning the entire biomedical research spectrum, this program allows students to acquire a deep knowledge of a chosen discipline and the ability to communicate and collaborate across others.

SIX EMPHASIS AREAS

Expand your future with one of our six emphasis areas:

Biochemistry and Biophysics

Cancer Biology

Infection and Immunity

Integrative Physiology

Nutrition and Exercise Physiology

Population and Precision Health

INTERESTED?

Thank you for your interest in the University of Missouri Translational Biosciences Graduate program. We welcome your questions. Please feel free to contact Admissions with any additional questions or concerns.

Chelsea Stone
Sr. Recruitment Coordinator

✉ c.stone@health.missouri.edu

☎ (573) 882-0955

🌐 medicine.missouri.edu/translational-biosciences

LEARN MORE ▼

