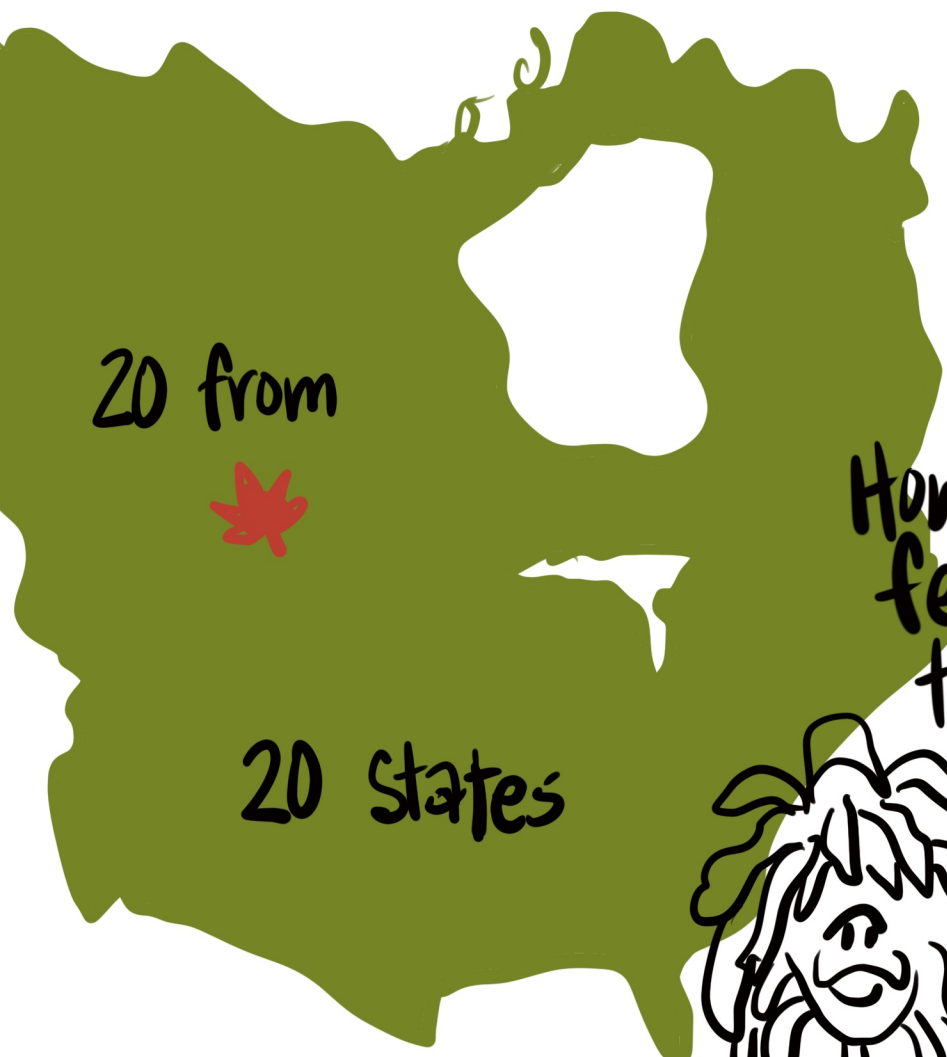
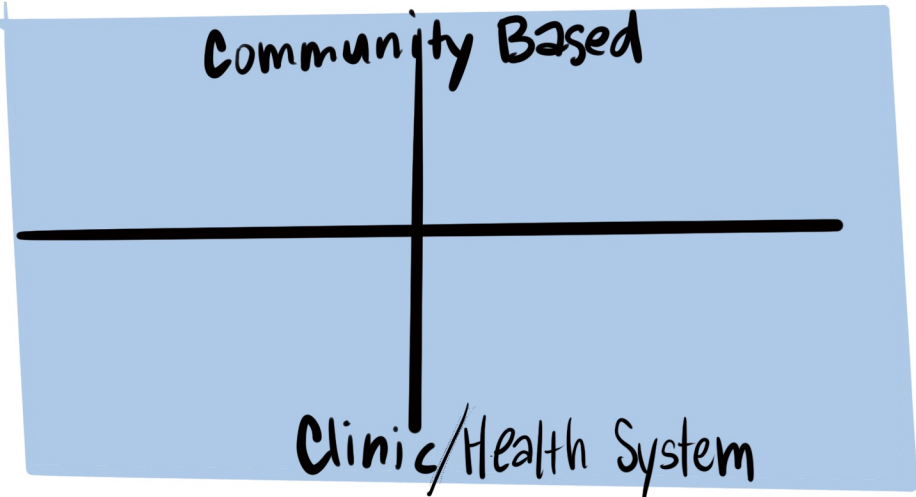


4th Annual



How are you feeling today?

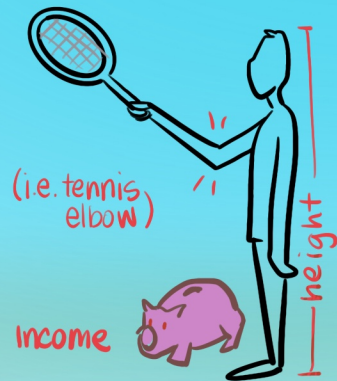



Have some fun!
Learn something
NEW

Using Facilitation to Promote

Preliminary Thoughts on an Explicit Shift

HEALTH DIFFERENCES

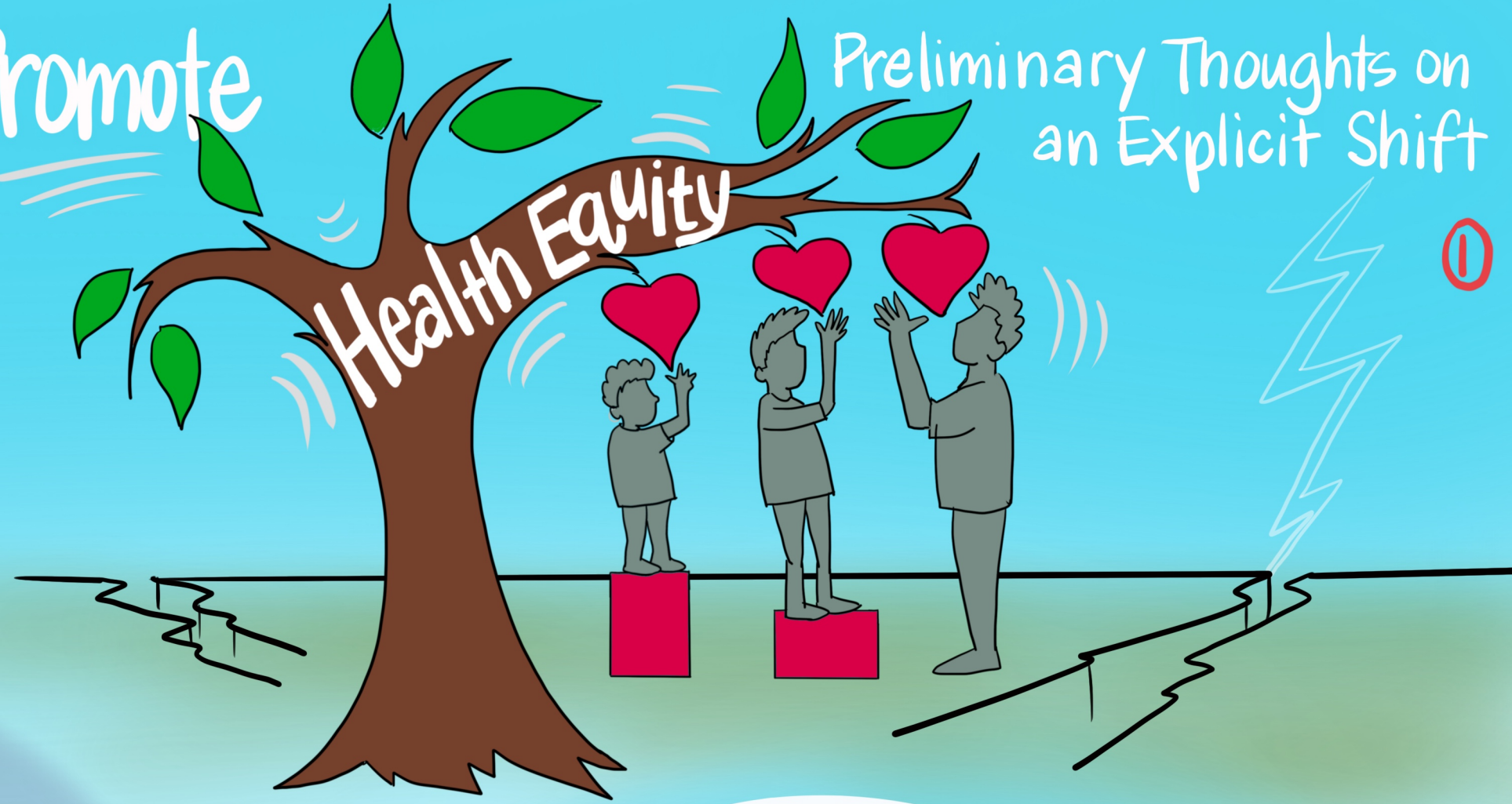


HEALTH DISPARITY

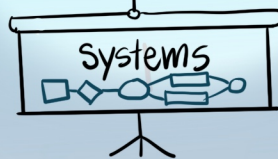


HEALTH EQUITY

↓ & eliminate disparities in health & its determinants



Detect Understand Intervene



Eva Woodward

Using Facilitation to Promote

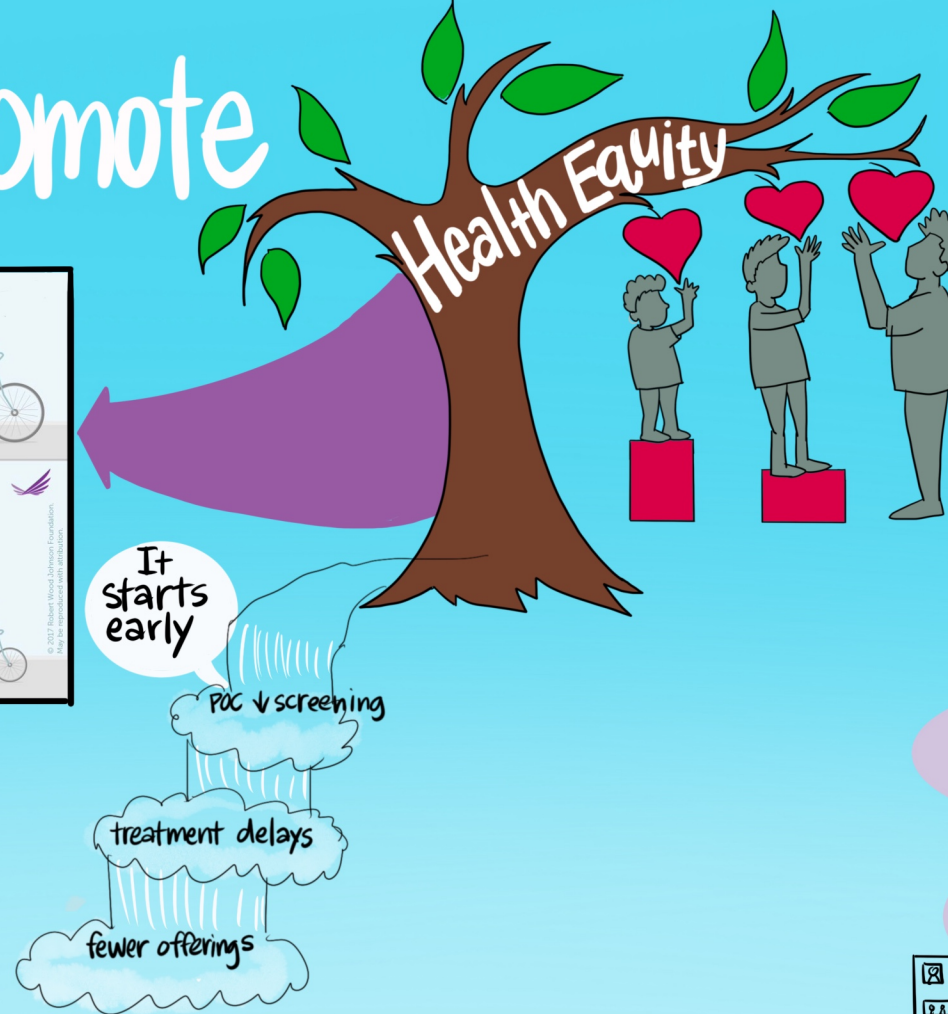
Preliminary Thoughts on an Explicit Shift



This illustration is easy to understand; great starting point



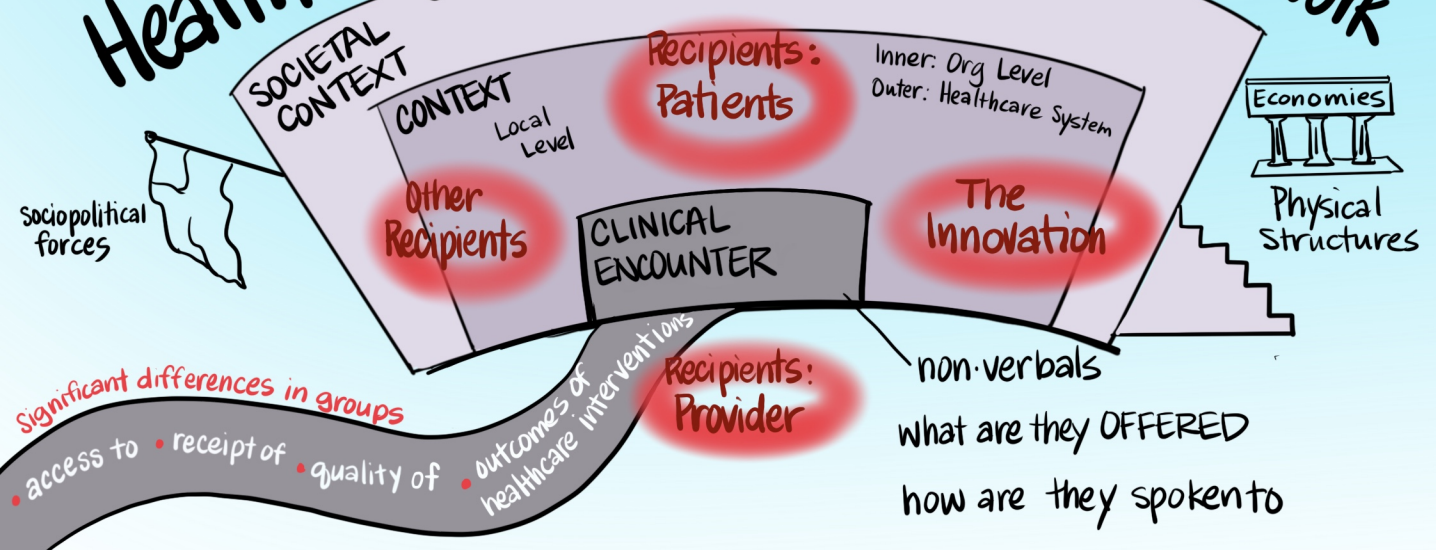
giving everyone the same thing = **EQUALITY**
tailored toward **EQUITY** and **JUSTICE**



ACTIONS I can take

- Talking about it / Engaging community members in patient/family advisory efforts
- Utilize community data
- EHR cooperate & pull measures to evaluate equity
- Acknowledge the disparities
- Translating resources into multiple languages
- Build dashboards ID vulnerable disparities
- staff fatigue - how to engage them
- ID those who are experiencing inequities

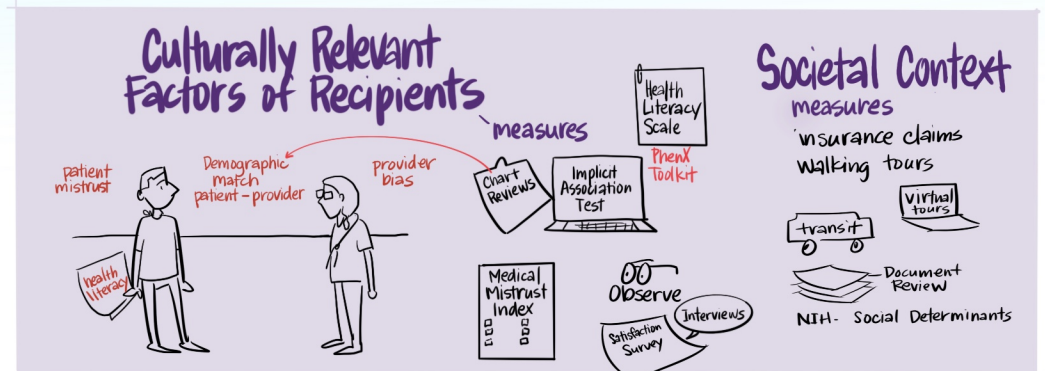
Health Equity Implementation Framework



STRATEGIES

- Engage Patients in Implementation
- Adapt innovation for people experiencing disparity
- Repair harm
- Address trust
- Enhance cultural competence
- ↓ unconscious bias staff/providers
- Enhance structural competence of clinics, medical centers, systems
- Monitor for changes
- preventing organizations from addressing disparities
- distance pandemic
- waitlist cancellations
- where it is offered
- systems based

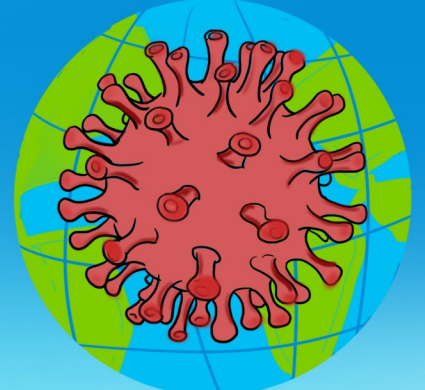
Eva Woodward



Adapting Facilitation in Light of Challenges in 2020

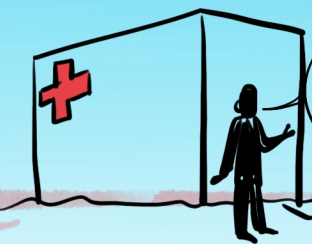
AHRQ Unhealthy Alcohol Use Project

2020



moderated by
Stephanie Kirchner

Why is it Important?



Don't ask to me to do one more thing!
engage practice

This has been a problem

rethinking ~ the discomfort of this topic

meeting them where they are

start w/ clinicians

religious cultural

start

SPECTRUM

Permission to talk about what was happening

- favorite part of meeting

- Respectful
- Got to Know Them
- Share their stories & Successes



Nurse Practitioners

Virtual Panel of Successes



Pride

E-learning modules

CME Credit

into grant 2 groups:



in-person



virtual

common ground for P.F. learn context

ready made

learned too much content

Virtual was very successful, prefer hybrid

FDA approved drugs



I didn't know/feel comfortable prescribing these drugs

Stories... trauma even if deny drinking



make assumptions

He doesn't drink

Leadership Engagement

some practices liked to go through it together



filling out modules together worked w/ their time frame



helped w/ turnover



project owner

really helped w/ distance often clinical staff

Essential?

already having some engagement

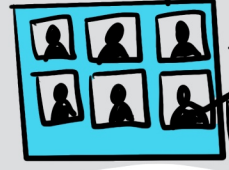


recruitment

closed - Rural Primary Care Clinics

didn't have tech

Regional Health Groups



Got me in the room - momentum

invite

Approaching one clinic to get into group/clinic



easy to access me Calengly?

Panelists:

Alex Krist

Julie Schmeltzer

Bonnie Jortberg

Michelle Rockwell

Robert McNellis

Rae Sanchez



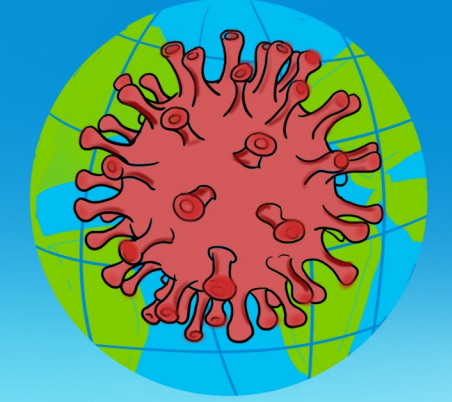
NAPCRG

International Conference on Practice Facilitation

Adapting Facilitation in Light of Challenges in 2020

AHRQ Unhealthy Alcohol Use Project

2020



2

Evidence-based PRACTICES

Focus on continuous quality improvement

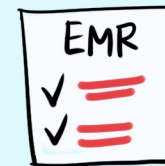


How to be Successful

Connecting/Making it **PERSONAL**.
... then connecting to the



This is part of our workflow



Enticement of:
"Get free practice help"

Dealing w/ Turnover

During recruitment interview:

Tell me about your interest/passion in the area of alcohol abuse

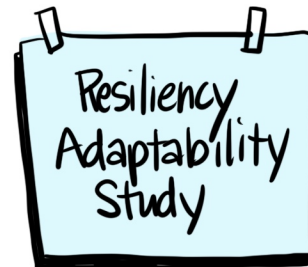


The Need for Practice Facilitation to build Resiliency

Practice Facilitation
↑
Increased Capacity



Our Experience:
Practices that engage w/ P.F. have weathered the pandemic better



leads w/ what we need...
... not from health system

Panelists:

Bonnie Jortberg

Michelle Rockwell

Robert McNellis

Alex Krist

Rae Sanchez

Julie Schmeltzer



NAPCRG

International Conference on Practice Facilitation